

## Horse Camp and Trail Rules

Please observe the following:

1. This campground is for horse riders only.
2. Day users are to use the day-use parking lot. Do not park in camp area.
3. Horse campers must register at the Self-Registration Booth. Only one unit is permitted per campsite.
4. Campsites are available on a first-come first-served basis; saving campsites is prohibited.
5. Fires and camping are allowed in designated areas only. Do not move fire rings.
6. Trash and litter should be handled with the back-country ethic, "Pack it in, pack it out."
7. Do not leave fires unattended or dispose of trash in fire rings.
8. For your safety, the forest closes at dark; riding is not permitted after dark.
9. Please park all equipment on your campsite; do not park in the grass.
10. Maintain your campsite in a clean and sanitary manner. Citations may be issued.
11. Please use the hitch posts; tying horses to trees is prohibited.
12. Please observe quiet hours from 11:00 p.m. to 8:00 a.m.
13. Alcoholic beverages are prohibited.
14. The use of firearms is restricted to lawful hunting only.
15. Riding is permitted only on designated painted trails (orange, red, purple, and white). Riding is prohibited in state park and preserve areas. (Exception: Riders of the Buckeye Trail may use the horsemen's

bypass around the east end of Old Man's Cave and Cedar Falls).

16. The State Forest boundary is marked with yellow blazes.

## Practice Trail Etiquette

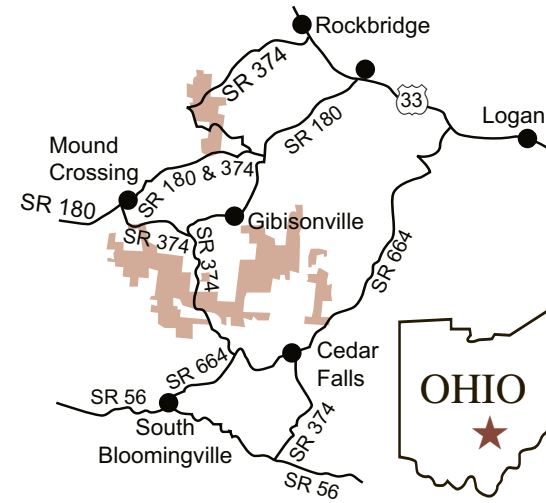
The Hocking State Forest Bridle Trail is one of the most popular riding areas in our state with more than 30,000 horse and rider visits each year.

As defined in our mission, the ODNR Division of Forestry is responsible for managing the soil and water resources within Hocking State Forest. In order to protect the trails and woodlands from soil erosion and other resource damage, horse riding is permitted only on designated painted trails. The Division of Forestry has implemented several changes, many of which can be seen as you ride the trails. We need your help to ensure the protection of forest land surrounding the bridle trails. Practicing proper trail etiquette and encouraging others to do the same, helps us keep Hocking State Forest a beautiful place to ride. This includes:

- Ride only on designated painted trails.
- Never tie to trees.
- Do not shortcut trail switchbacks.
- Pick up litter.
- Do not ride in caves or streams.
- During periods of wet weather and muddy soil conditions, do not ride.
- Report violations and down trees to our toll free number 1-877-247-8733.

The Division of Forestry believes these practices will protect the forest and soil resources. A proposal to begin an "Adopt-a-Hill" trail program has been developed. Groups and individuals may select and volunteer to "Adopt" a particular trail or hill section. Those who are interested may contact the Division of Forestry. The Division of Forestry cares about the forest visitor and their experience. It is for this reason that horse riders are important partners in conservation.

## Location Map



## Additional Information

**Hocking State Forest**  
19275 State Route 374  
Rockbridge, Ohio 43149-9749

877-247-8733  
ohiodnr.com/forestry

**EMERGENCIES**  
Call 911

## ODNR Division of Forestry Mission

**Promoting and applying management for the sustainable use and protection of Ohio's private and public forest lands.**



Division of Forestry • 2045 Morse Rd., H-1  
Columbus, Ohio 43229-6693  
Equal Employment Opportunity Employer M/F/H

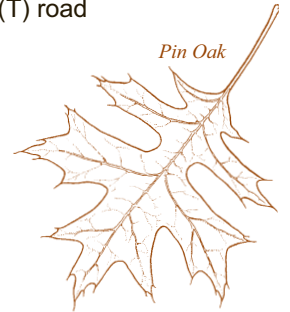
# HOCKING STATE FOREST BRIDLE TRAIL



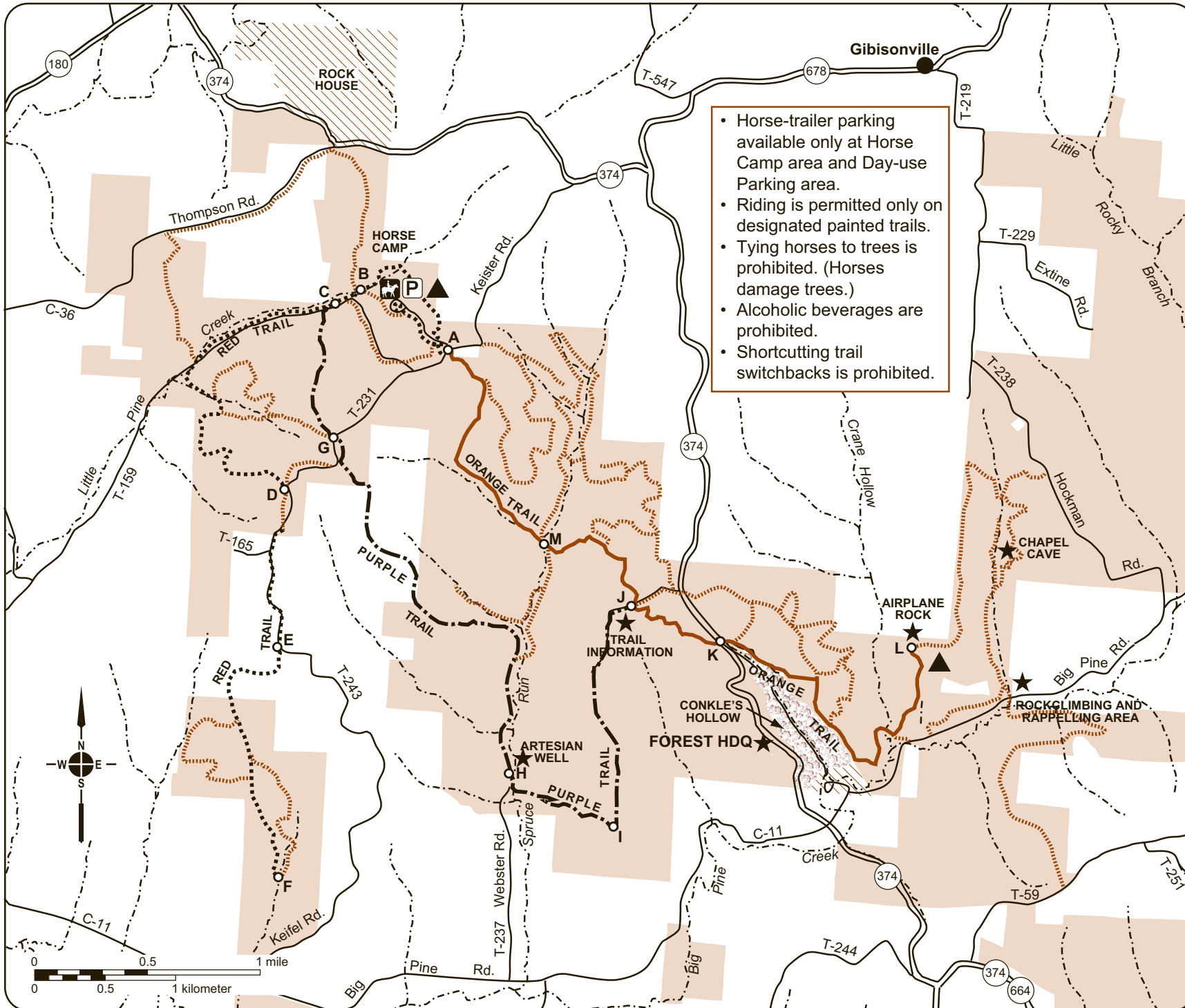
# HOCKING STATE FOREST BRIDLE TRAIL

## LEGEND

- State highway
- County (C) or Township (T) road
- State Forest land
- Villages, cities, towns
- Stream, creek, river
- Point of interest, facility
- Orange bridle trail
- Purple bridle trail
- Red bridle trail
- Side bridle trail - Painted in white
- Trail reference point
- Horse Camp and Day-use Parking (only area available for horse-trailer parking)
- Latrine
- State Park land
- Conkle's Hollow State Nature Preserve



- Horse-trailer parking available only at Horse Camp area and Day-use Parking area.
- Riding is permitted only on designated painted trails.
- Tying horses to trees is prohibited. (Horses damage trees.)
- Alcoholic beverages are prohibited.
- Shortcutting trail switchbacks is prohibited.



The trails shown on this map represent bridle trails north of Big Pine Road. Strict enforcement of riding rules is applied.

### APPROXIMATE DISTANCES (MILES)

	Orange trail	Purple trail	Red trail
A - M	1.1	C - G 0.6	A - B 0.4
M - J	0.6	G - H 2.1	B - C 0.2
J - K	0.2	H - I 0.6	C - D 1.7
K - L	1.5	I - J 1.0	D - E 0.8
			E - F 1.1

Map reviewed and approved by David Lytle, Chief, ODNR, Division of Forestry 09/07

*State forest ownership shown is representative and believed to be correct but not warranted. State forest boundary lines on the ground are identified with signs and/or yellow paint marks on trees.*